

ARCH REX



Deborah Smith/Myfanwy Rees

AUCKLAND CITY CALENDAR

9
8
6
1

Photographs: Tania Evans, Jennifer French, Myfanwy Rees, Deborah Smith and Mark Smith.

Design: Glenn Hunt
Production: Myfanwy Rees

Research and Text: Lucy Treep, with the help of Mary Cooper, Noni Boyd and Di Stewart from the Historic Places Trust.

Supported by the City Community Committee, Development Action Group, Karangahape Road Residents Association, Edward Allan Flynn, Dale Major.

Printed by the Elam Fine Arts Printing Research Unit, University of Auckland, New Zealand 1988.
Typesetting by Computype Services Auckland Limited.



Myfanwy Rees

1

2

3

4

5

6

7

8

9

10

11

12

13

14

15

16

17

18

19

20

21

22

23

24

25

26

27

28

29

30

31

January

1

6

8

9

High Court Building, Waterloo Quadrant, 1868. Presently undergoing major renovation and redevelopment, this building has not been in regular use for some years. The old Law Library attached to the northwest corner has been demolished and a new wing will wrap around the entire north and west sides of the original gothic revival courthouse. Unfortunately, the northwest corner suffered a partial collapse during excavation work in September 1988. It is currently being recovered.



Deborah Smith

1 2 3 **4 5** 6 7 8 9 10 **11 12** 13 14 15
16 17 **18 19** 20 21 22 23 24 **25 26** 27 28

February

1

6

8

9

Northern Roller Mills, 65 Fort St. Built 1886-1963. This group of buildings, bound by Emily Pl, Fort St and Shortland St, provides a dynamic link with central Auckland's industrial past. The range of styles and ages of the buildings, from the original 1886 mill to the modernist storage bins of 1963, forms one of Auckland's most unusual and enjoyable skylines. Unfortunately, the Northern Roller Milling Co. has moved out of the city and in May 1987 these buildings were offered for sale by tender. Their fate is still undecided.



Tania Evans

1 2 3 **4 5** 6 7 8 9 10 **11 12** 13 14 15 16
 17 **18 19** 20 21 22 23 24 **25 26** 27 28 29 30 31

1
 9
 March
 8
 9

Wharf Police Building, 2 Quay St. Built 1903. Formerly the Colonial Sugar Refining Company, the Wharf Police Building is the most intact remaining warehouse on the Auckland waterfront. The interior and fittings of the front portion of the building are in a surprisingly original condition. 1986 the Auckland City Council and the Auckland Harbour Board jointly decided to redevelop the whole block. In 1987 Kupe Group submitted a proposal which did not include the retention of this building. The Wharf Police Building currently has a proposed HPT 'B' classification.



Myfanwy Rees

1 2 3 4 5 6 7 8 9 10 11 12 13 14 15
16 17 18 19 20 21 22 23 24 25 26 27 28 29 30

1
6
April
8
9

Civic Theatre, corner Queen and Wellesley St. 1929. Despite its neglect in recent years, the Civic Theatre is still to many people a 'movie palace'. The concept of the design reflects the escapist nature of film, an idea overlooked in the design of modern cinemas. The Hindu style foyer with its unusual triangular plan and exuberant eastern decoration spirits the theatre's patrons to another world. In 1993 the lease on this building passes back to the Auckland City Council. Hopefully, the Civic will remain one of Auckland's proudest possessions.



Deborah Smith

1 2 3 4 5 **6 7** 8 9 10 11 12 **13 14** 15 16
 17 18 19 **20 21** 22 23 24 25 26 **27 28** 29 30 31

1
 6
 May
 8
 9

Middle Courtville, 7 Parliament St. 1914. 'Middle' Courtville was the first block of self-contained apartments in Auckland and now is the middle of the three buildings which comprise Courtville today. Saved from demolition several times by the actions of its tenants, the ornately decorated building is now subject to a Protection Notice under the Historic Places Act 1980 and the land has been rezoned Residential 9b under the Reviewed District Scheme 1987. HPT 'B'.



Jennifer French



1 2 **3 4** 5 6 7 8 9 **10 11** 12 13 14 15 16
17 18 19 20 21 22 23 **24 25** 26 27 28 29 30

1
 6
 June
 8
 9

Auckland Railway Station, Beach Rd. 1931. Designed by architects Gummer and Ford, the Railway Station has an imposing front entrance with three Romanesque arched windows and a porte cochère, but behind is an interior which has suffered repeated institutional vandalism. Fortunately there are still interior elements that are worth preserving such as the entrance foyer, ceiling and mosaic floor, the ramps and subway with tiled dados and the impressive, arched trusses to the concourse.



Myfanwy Rees

1

2

3

4

5

6

7

8

9

10

11

12

13

14

15

16

17

18

19

20

21

22

23

24

25

26

27

28

29

30

31

1

6

8

9

July

Espano Apartments, Poynton Terrace. 1927. This spanish-style apartment building was designed by Sinclair O'Connor, who was also the architect of Courtville Apartments. Appropriately positioned in a cul de sac overlooking Myers Park and Michelangelo's statue of Moses, this residential building is an example of how inner city living can work.

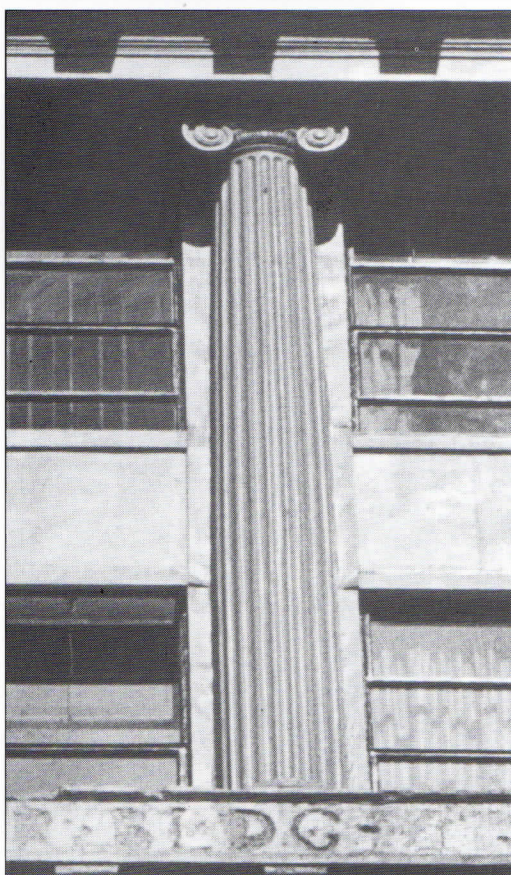
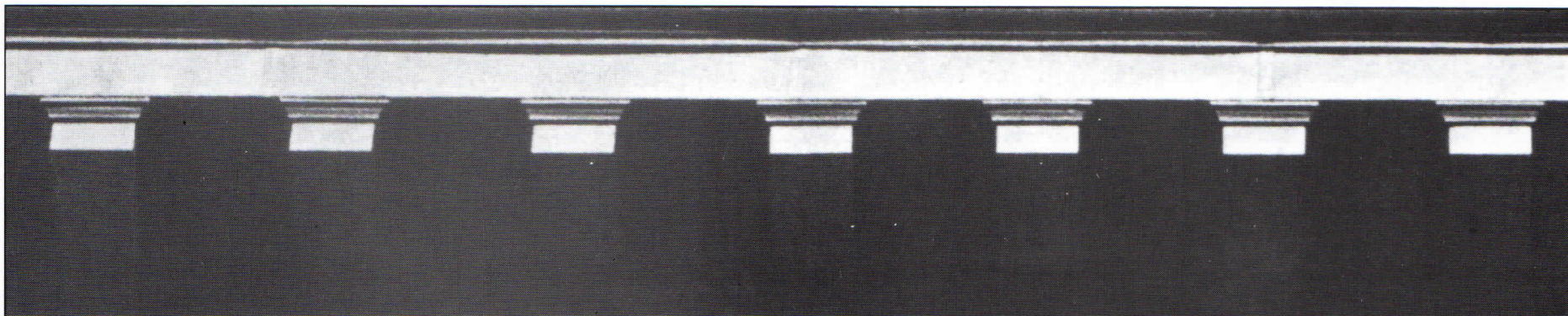


Tania Evans

1 2 3 4 **5 6** 7 8 9 10 11 **12 13** 14 15 16
 17 18 **19 20** 21 22 23 24 25 **26 27** 28 29 30 31

1
 9
 August
 8
 9

His Majesty's Arcade, 1902, Browns Mill, late 1870s, and the Blue Stone Store, 1861. Durham Lane. Following the infamous demolition of His Majesty's Theatre and Arcade by Pacer Kerridge over Christmas 1987 and the overnight demolition of Browns Mill by Mainzeal in August 1988, the Blue Stone Store is the only surviving historical building on the block. It is the oldest commercial building in the central city and the only building this close to Queen St to be built of stone. Mainzeal, the owners, have objected under the District Scheme Review to the inclusion of the Blue Stone Store in the schedule of buildings of special value because 'the site on which the building stands is better suited to comprehensive development'.



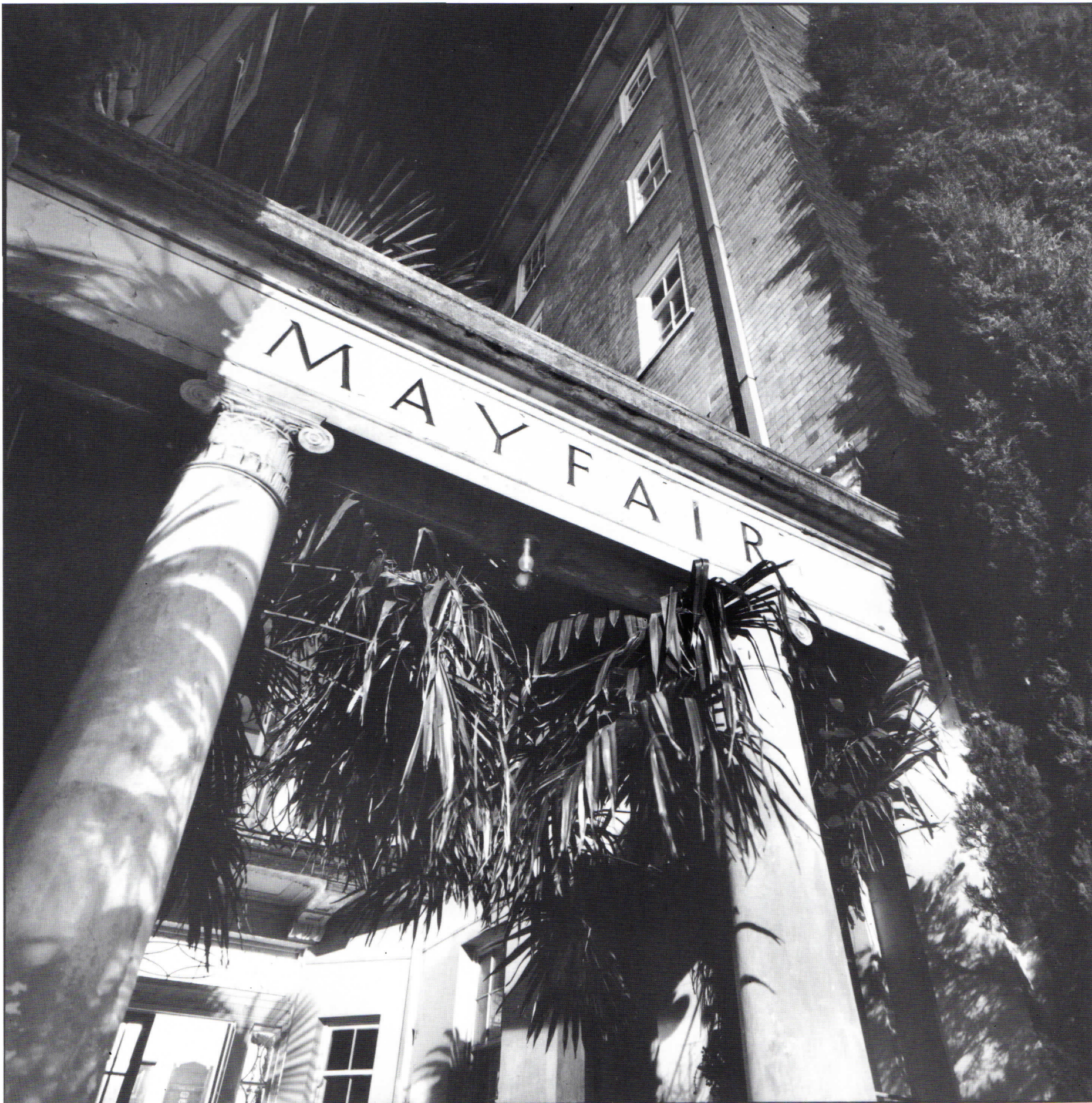
Tania Evans

1 **2 3** 4 5 6 7 8 **9 10** 11 12 13 14 15 **16**
17 18 19 20 21 22 **23 24** 25 26 27 28 29 **30**

September

Lister Building, 9-17 Victoria St. East. 1923/4. One of the last examples in Auckland of the palazzo aesthetic common in early skyscraper design, the Lister Building had its facade seriously damaged by its owners, the AMP, in December 1987. In the interests of 'public safety' all the exterior embellishment was knocked off. Despite its Historic Places Trust 'C' classification the 'Trust' were not notified prior to this vandalism. The AMP Society intend to demolish the now scarred Lister Building in three years as part of its plans for development of the whole block.

1
9
8
9



Mark Smith

1 2 3 4 5 6 **7 8** 9 10 11 12 13 **14 15** 16
 17 18 19 20 **21 22** 23 24 25 26 27 **28 29** 30 31

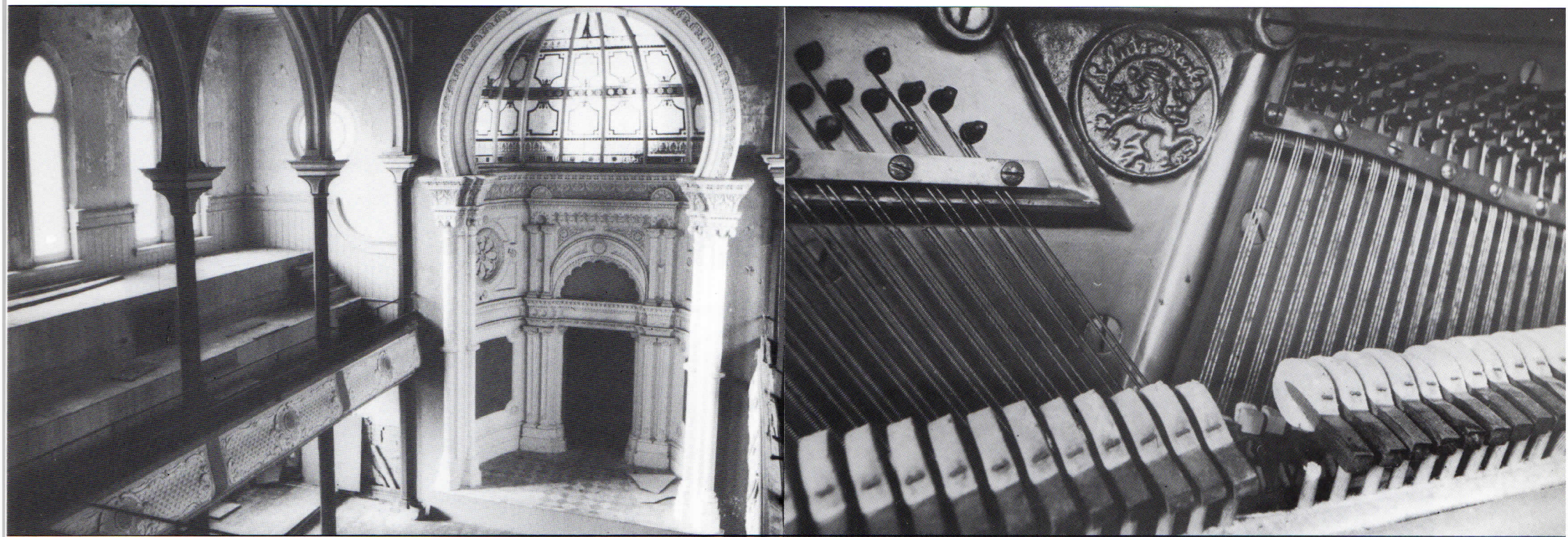
October
 8

Mayfair Apartments, 75 Parnell Rise. 1929/30. Designed by Gummer and Ford, the architects of the Auckland Railway Station and the Station Hotel, Mayfair stands at the brow of Parnell Rise. Its northwest face looks out towards the harbour. The street-frontage of Mayfair provides an inviting courtyard, screened from the street by ionic columns and palm trees. A recent proposed zone change on the land to Residential 7a effectively prevents shops and offices being built on the site. This is being fought by the owners.

1

9

9



Myfanwy Rees

1 2 3 **4 5** 6 7 8 9 10 **11 12** 13 14 15 16
 17 **18 19** 20 21 22 23 24 **25 26** 27 28 29 30

November
 8
 9

Synagogue, 19a Princes St. Built 1885. Owned and neglected for many years by the Auckland City Council, this building is an integral part of the Princes St historical district. The former Synagogue sits at the end of a row of grand houses built in the 19th Century for wealthy businessmen. Its interior is as impressive as its exterior, displaying a skilful and free interpretation of eastern motifs. Ironically, in the light of the demolition of the Karangahape Rd National Bank Building in November 1987, the old Synagogue is being renovated and developed to provide premises for the National Bank.
 HPT 'B'. ACC CI.



Deborah Smith

1 **2 3** 4 5 6 7 8 **9 10** 11 12 13 14 15 **16**

17 18 19 20 21 22 **23 24** 25 26 27 28 29 **30 31**

D *ecember*
8

Administration House, 5 O'Connell St. Built 1925. One of the few buildings in Auckland with fluted stone columns. This two-storey office building with its neo-classical facade is faced with Oamaru stone and New Zealand marble. The streetscape which Administration House is part of, is made up of low-rise, human-scaled buildings, overlooking narrow, pedestrian-orientated streets. Each building forms an integral part of the street wall in an area which is increasingly threatened by large scale developments.

1

6

8

9