



John Reynolds

A U C K L A N D
CITY 1986 CALENDAR

Photographs: John Reynolds and Deborah Smith
 Production: Elizabeth Treep and Felicity Wallace
 Supported by: Auckland Architectural Association, Graeme Burgess, Development Action Group, DKD Cafe, Kirsty van der Jeijden, Peter Walker, Peter Were.



John Reynolds

The Y.W.C.A. Building (1917), 385 Queen Street. Architect: W.H. Gummer. Owned by Smart Developments. Historic Places Trust classification C; A.C.C. Classification C2. Proposed demolition November 1985.

Cover Photograph: Scotts Building (1885), 23-25 Victoria Street West. Architects: Mason and Wales (Dunedin). Historic Places Trust classification C; A.C.C. classification C2. Owned by National Pictures Ltd. Demolition proposed by owners but in July 1985 A.C.C. Planning Committee upheld condition of classification that C2 buildings "should not be wilfully removed, damaged or altered in a major way unless there is a compelling reason". The facade of the Scotts Building is to remain.

S	M	T	W	T	F	S
			1	2	3	4
5	6	7	8	9	10	11
12	13	14	15	16	17	18
19	20	21	22	23	24	25
26	27	28	29	30	31	

JANUARY



John Reynolds

General Buildings (1927). Shortland Street Addition (1979). Corner of Shortland and O'Connell Streets. Architect: W.R. Bloomfield. A.C.C. classification C2.

S	M	T	W	T	F	S
						1
2	3	4	5	6	7	8
9	10	11	12	13	14	15
16	17	18	19	20	21	22
23	24	25	26	27	28	

FEBRUARY



John Reynolds

His Majesty's Theatre and Arcade (1902) Queen Street. Architects: W. Pitt (Australia) and E. Mahoney & Son (Auckland). Historic Places Trust classification C.

S	M	T	W	T	F	S
						1
2	3	4	5	6	7	8
9	10	11	12	13	14	15
16	17	18	19	20	21	22
23	24	25	26	27	28	29
30	31					

MARCH



Deborah Smith



Deborah Smith

Auckland City Council Tepid Saltwater Swimming Baths (1914). Hobson Street. No longer saltwater baths.

S	M	T	W	T	F	S
		1	2	3	4	5
6	7	8	9	10	11	12
13	14	15	16	17	18	19
20	21	22	23	24	25	26
27	28	29	30			

A P R I L



St. Kevin's Arcade Park Building (1924) connects Karangahape Road and Myer's Park. Architect: W.A. Cumming.
 Built by John Bros. Ltd. Stairway substantially altered by additional shops built at Karangahape Road level.
 Residential flats face Myer's Park.

Deborah Smith

S	M	T	W	T	F	S
				1	2	3
4	5	6	7	8	9	10
11	12	13	14	15	16	17
18	19	20	21	22	23	24
25	26	27	28	29	30	31

MAY



John Reynolds

The Corner Courtville (1919) 5 Parliament Street. Architects: Sinclair-O'Connor. Inner city apartments built by Jim Fletcher (later Sir James) a Dunedin builder, for early Auckland developers and businessmen Mr. Ernest Potter and Mr. William Walter Stanton. Historic Places Trust classification D. Owned by the Justice Department and administered by The Public Trust. Subject of undergraduate thesis held by the Auckland University School of Architecture library; J.M. Stout: Courtville in Context (1983). Saved from proposed demolition to make way for Supreme Court extensions by residents' action during the late 1970's.

S	M	T	W	T	F	S
1	2	3	4	5	6	7
8	9	10	11	12	13	14
15	16	17	18	19	20	21
22	23	24	25	26	27	28
29	30					

JUNE



John Reynolds

The Civic Theatre (opened 18 December 1929). Corner Wellesley and Queen Streets. Architects: Bohringer, Taylor & Johnson (Melbourne, Australia) W.T. Leighton (N.Z. Managing Architect). Built by Fletcher Construction Company (NZ) and Super Construction Company (Australia) in 33 weeks. First atmospheric theatre in New Zealand. Subject of report held in University of Auckland School of Architecture library; Bruce Cavell: Civic Theatre. Historic Places Trust classification B. Why hasn't the Civic been painted? And why has the clock stopped?

S	M	T	W	T	F	S
		1	2	3	4	5
6	7	8	9	10	11	12
13	14	15	16	17	18	19
20	21	22	23	24	25	26
27	28	29	30	31		

J U L Y



John Reynolds

The Japanese Bathhouse. Architect unknown. This irregular beauty makes a quirky corner at the intersection of Beach Road and Emily Place.

S	M	T	W	T	F	S
					1	2
3	4	5	6	7	8	9
10	11	12	13	14	15	16
17	18	19	20	21	22	23
24	25	26	27	28	29	30
31						

AUGUST



Deborah Smith

Vulcan Lane. The north side of Vulcan Lane between Queen and High Streets forms part of the site for a proposed development by the New Zealand Insurance Corporation and is threatened with demolition. The Queens Ferry Hotel and the Occidental Hotel (1870) are classified C by the Historic Places Trust and C2 by the A.C.C.

S	M	T	W	T	F	S
	1	2	3	4	5	6
7	8	9	10	11	12	13
14	15	16	17	18	19	20
21	22	23	24	25	26	27
28	29	30				

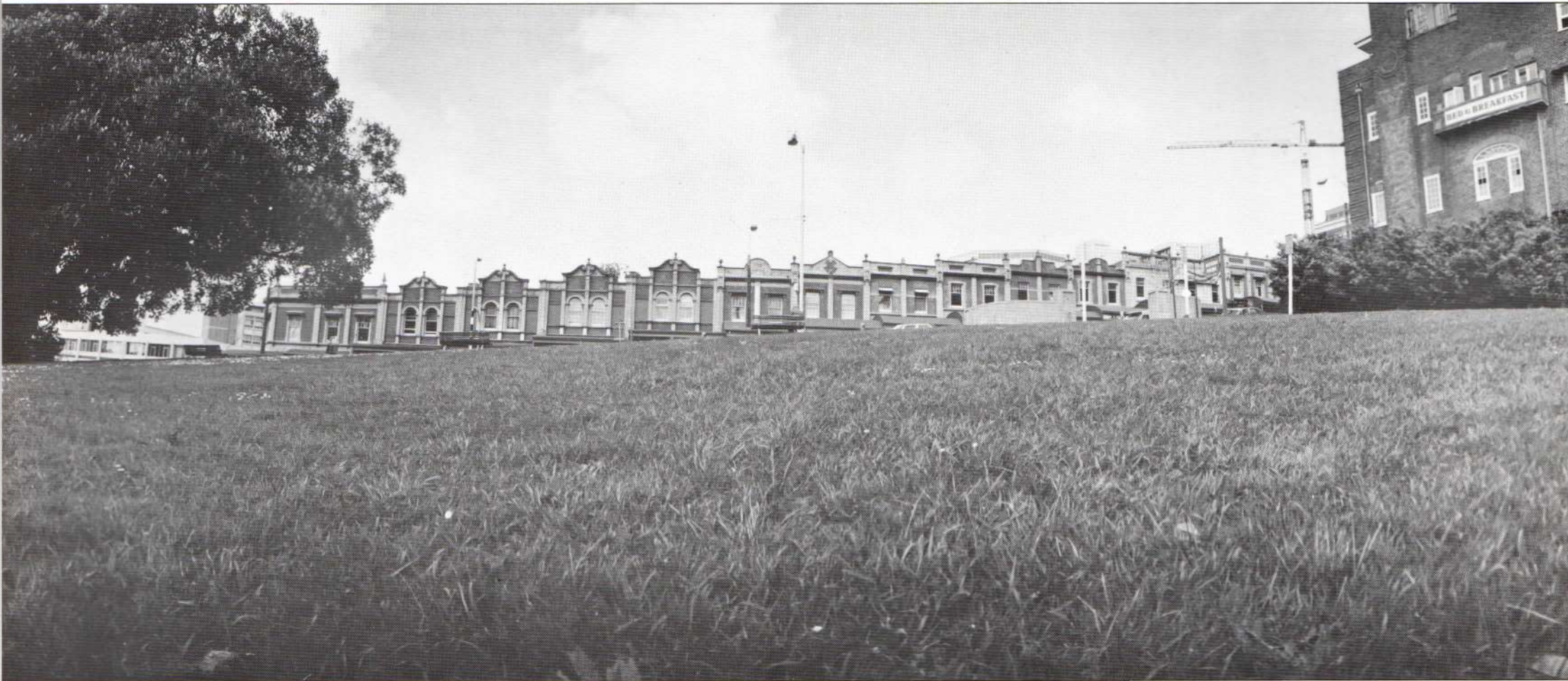
SEPTEMBER



Hall of Commerce. High Street. Owned by the A.C.C. Demolition October 1985. The Hall of Commerce housed a large number of tenants with a wide range of occupations. People also lived here. This building is being replaced by a carpark building.

S	M	T	W	T	F	S
			1	2	3	4
5	6	7	8	9	10	11
12	13	14	15	16	17	18
19	20	21	22	23	24	25
26	27	28	29	30	31	

OCTOBER



456-486 Queen Street. (1909) Historic Places Trust classification C. (Facade only)
Deborah Smith

S	M	T	W	T	F	S
						1
2	3	4	5	6	7	8
9	10	11	12	13	14	15
16	17	18	19	20	21	22
23	24	25	26	27	28	29
30						

N O V E M B E R



John Reynolds

Landmark House. (The Auckland Electric Power Board Building). (1930). Queen Street. Architect: Alva Bartley, Bartley and McGowan. Historic Places Trust classification C. A.C.C. classification C2.

Classification of Buildings by Auckland City Council.

Two classifications only.

1. C1 Buildings of prime importance. Following application to destroy or substantially alter a building classified C1:
 - (1) A.C.C. Planning Committee notifies those groups they believe will be concerned i.e. The Historic Places Trust, the New Zealand Institute of Architects, Community Committees, The Civic Trust, and adjacent neighbours to the building.
 - (2) Public notice is given in the newspaper under "Applications to Planning Consent under the Town and Country Planning Act 1977". One month is allowed for objections.
 - (3) A report and recommendation is compiled by the A.C.C. Town Planning Dept.
 - (4) A public hearing is held by the A.C.C. Planning Committee.
 2. C2: Buildings of Lesser Importance. Following application to destroy or substantially alter a C2 classified building.
 - (1) A report is written
 - (2) No public notification.
 - (3) N.Z.I.A., New Zealand Historic Places Trust are invited to sit with and advise the A.C.C. Planning Committee. Community Committees affected are invited to make a submission. There is no provision for objection.
- These classifications are determined by the "Auckland City Council District Scheme" which is presently being reviewed.

S	M	T	W	T	F	S
	1	2	3	4	5	6
7	8	9	10	11	12	13
14	15	16	17	18	19	20
21	22	23	24	25	26	27
28	29	30	31			

DECEMBER